

LiFePO4 Lithium Battery

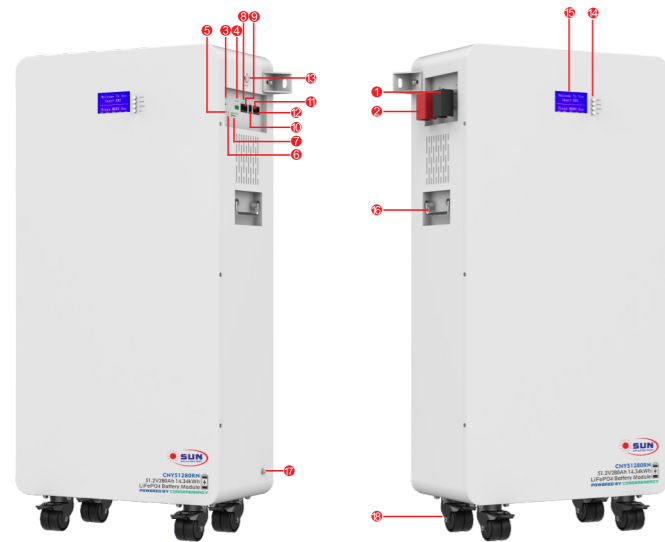
CNY51280RN 51.2V 280Ah-14.34kWh



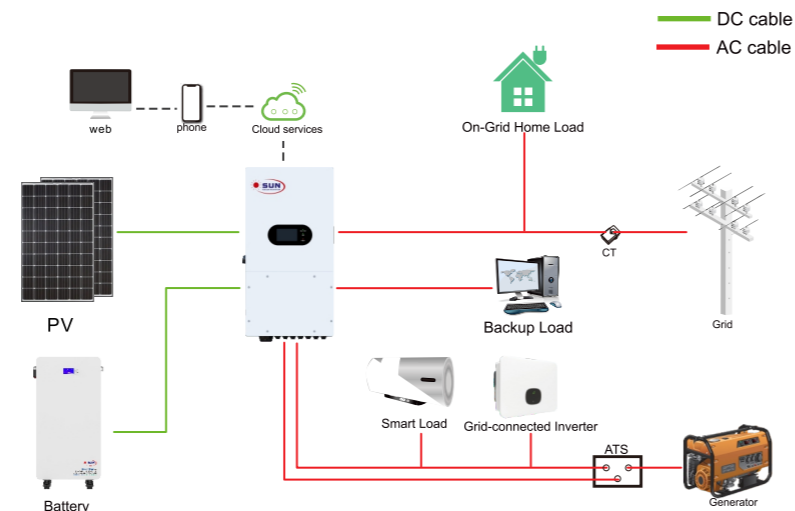
Product Features

- ▶ Ultra high safe LiFePO4 battery
- ▶ Built-in BMS for multiple protection & longer lifespan
- ▶ Active balancing function and lower self-consumption
- ▶ Lightweight module design for fast installation & easy maintenance
- ▶ Parallel up to 16 modules for flexible capacity extension.
- ▶ Wide temperature range for more application scenes.

Panel Printing Description



System Connection Diagram



- | | | |
|---------------------|---------------------|-----------------------|
| 1 Negative Terminal | 2 Positive Terminal | 3 RST |
| 4 Dry Contact | 5 RUN Lighting | 6 ALM Lighting |
| 7 SOC Lighting | 8 RS485A | 9 CAN |
| 10 RS232 | 11 Link Port A | 12 Link Port B |
| 13 Power Switch | 14 Operation Button | 15 LCD Display Screen |
| 16 Metal Handle | 17 Ground Wire | 18 Wheel |

SPECIFICATION

Model	CNY51280RN 51.2V 280Ah-14.34kWh
Item	Parameters
Cell Type	LiFePO4
Nominal Voltage	51.2V
Nominal Capacity	280Ah
Nominal Energy	14.34kWh
Dimensions(LxWxH)	930mm*450mm*235mm
Weight (approx.)	125KGS
Terminal Type	Screw Terminal
Case Material	SPCC
BMS Built-In	Yes
Internal Resistance	<25mΩ
Efficiency – Round Trip	>95%
Self Discharge Per Month	<3%
Max.Parallel Connection Qty.	16PCS
Series Connection	Not Allowed
Cycle Life(0.2C, 25°C@80% DOD)	6000 Cycles
Discharge Temperature	- 20 - 60°C
Charge Temperature	0 - 55°C
Storage Temperature	- 10 - 30°C
Bluetooth/Wifi	Optional
Touchable LCD Screen	Optional
Automatic DIP Setting	Optional
Voltage Window	43.2-58.4V
Recommend Charge Voltage	57.6±0.20V
Max Charge Voltage	58.4±0.20V
Recommend Charge Current	50A
Max Continuous Charge Current	200A
Recommend Discharge Voltage	57.6±0.20V
Max Discharging Voltage	43.2±0.20V
Max Continuous Discharge Current	200A
Peak Discharge Current	250A/0.5s

Other Information	
IP Level	IP20
Humidity	5%~85% RH (No condensation)
Warranty *	5 years
Certification	CE/IEC62619/UN38.3
Communication Port	RS485/CAN/Dry Contact
Protection	Over charge/discharge/current/voltage/temperature protection Short circuit protection, Reverse connection protection active balance, Low SOC protection